



# A Guide to Education in International Schools

In this guide, we have condensed and summarized the most basic and relevant information about education in International Schools in Singapore.

## Admission Into Schools

### Public Schools

All international students who wish to seek admission to the Primary 1 level of a mainstream primary school are required to undergo the P1 Registration Exercise. Please visit the MOE website for more information.

For Primary 2 to 5 and Secondary 1 to 3 admissions, students must sit for the Admissions Exercise for International Students (AEIS) test in order to join in January of the following year.

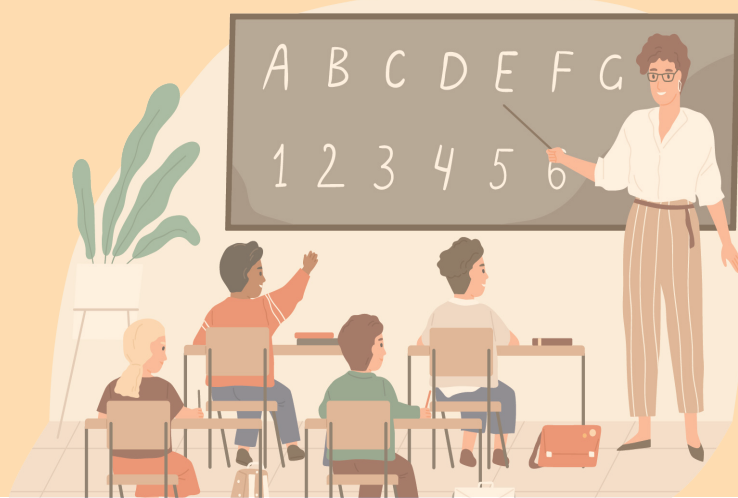
English is the medium of instruction. International students are encouraged to prepare for the centralised test. They should be familiar with the English and Mathematics syllabuses of the level preceding the one they are applying for.

### Private International Schools

International students who wish to seek admission to a pre-school, private international school or post-secondary institution (e.g. university or polytechnic) should approach the pre-school, private school or institution directly.

### Student's Pass

International students who wish to study in a public, government-aided or private school require a Student's Pass, unless he or she is a holder of a Dependant's Pass (DP) or an Immigration Exemption Order (IEO).



# Curriculum Breakdown

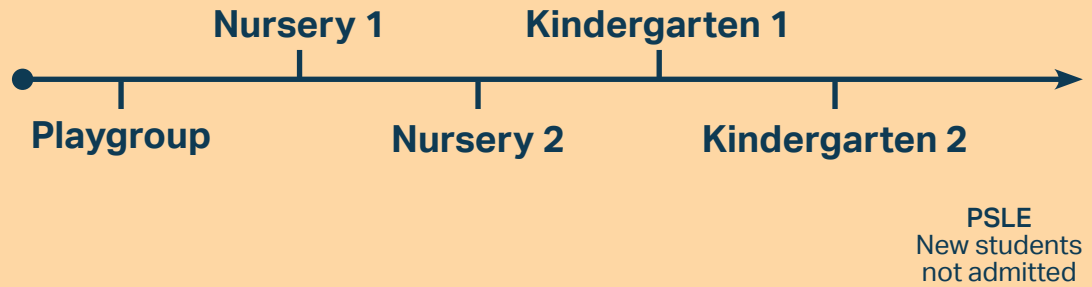
## Public Schools



### Age of Admission

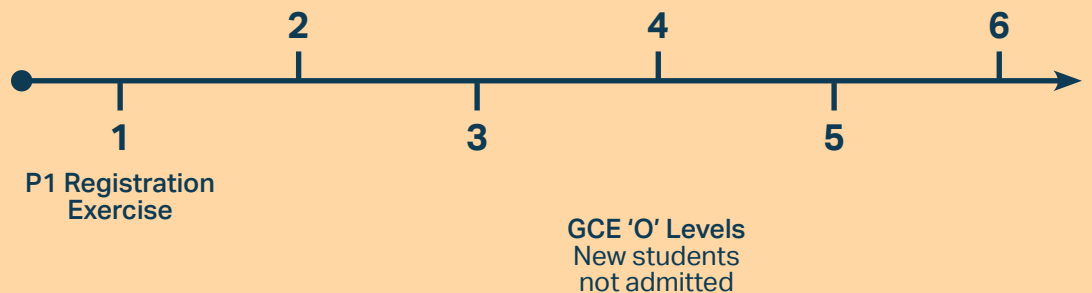
#### Pre-School

2 – 6 years old



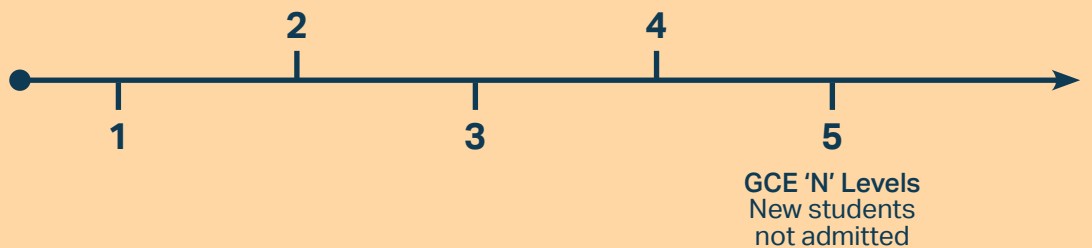
#### Primary

7 – 12 years old

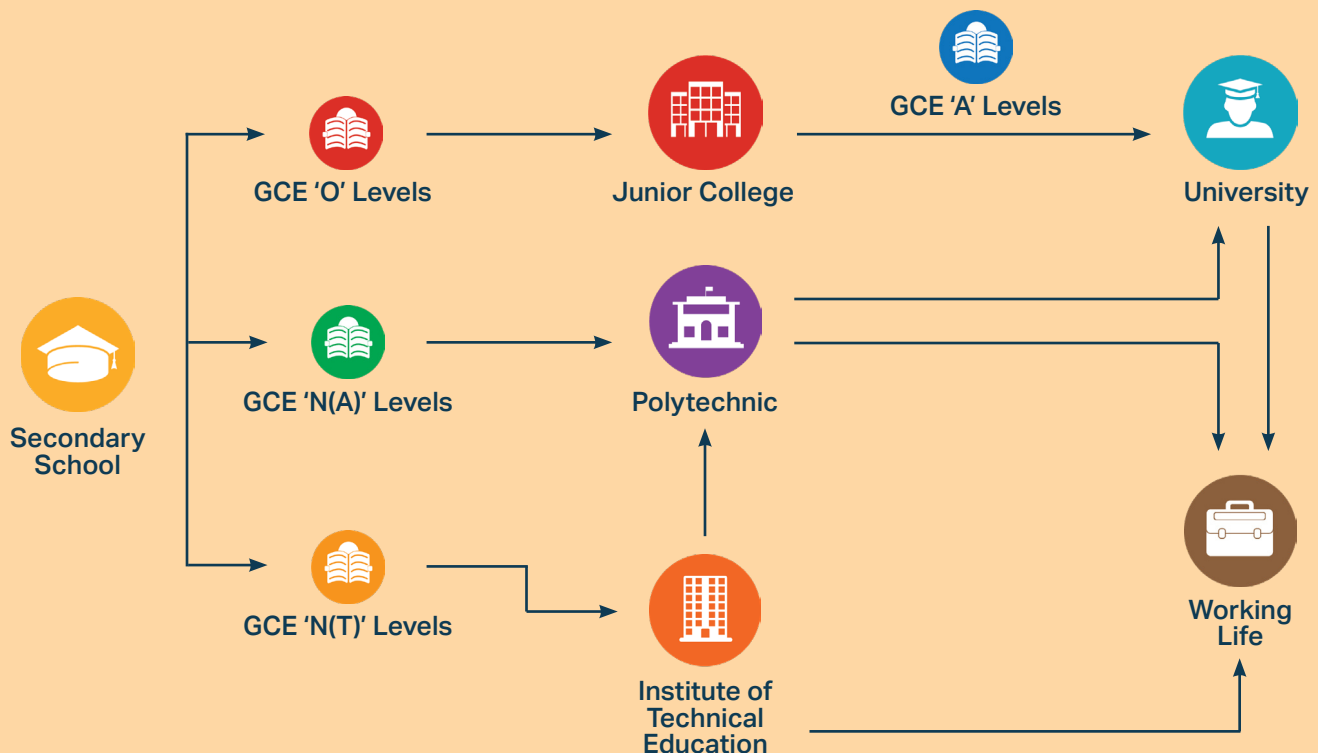


#### Secondary

13 – 16 years old



### Post-Secondary Options



### Junior Colleges

Anderson Serangoon Junior College  
Anglo-Chinese Junior College  
Catholic Junior College  
Hwa Chong Institution  
Tampines Meridian Junior College  
Millennia Institute  
Nanyang Junior College  
National Junior College  
Jurong Pioneer Junior College  
St. Andrews Junior College  
Temasek Junior College  
Victoria Junior College  
Yishun Innova Junior College

### Polytechnics

Ngee Ann Polytechnic  
Nanyang Polytechnic  
Republic Polytechnic  
Singapore Polytechnic  
Temasek Polytechnic

### Universities

National University of Singapore (NUS)  
Nanyang Technological University (NTU)  
Singapore Management University (SMU)  
Singapore University of Technology and Design (SUTD)  
Singapore Institute of Technology (SIM)  
Singapore University of Social Sciences (SUSS)

## Junior College vs Polytechnic

	Junior College	Polytechnic
Duration of Study	2 years	3 years
Cost	\$10 – \$300 a month depending on the JC itself	\$200 – \$300
Transportation Fee	Student Fare	Adult Fare
Attire	Uniform	No Uniform
Average Workload per Week	~40 hours Very academically rigorous, focus is on independent textbook studying with intense examination periods	~25 hours More group projects, application-based projects, textbook studying with exams
Courses and Subjects	General Paper Project Work Math Physics, Chemistry, Biology History, Geography Economics	Highly-specialised courses meant to equip students with real-life application skills E.g Biomedical Engineering, Mass Communication



## Private International Schools

### Curriculum and Level Breakdown

The curriculum and level breakdown varies greatly between each international school depending on nationality and its curriculum available. Here are some of the more popular curriculum and the schools that offer it.

#### General Certificate of Secondary Education (GCSE)

Australian International School  
Dover Court International School  
Dulwich College (Singapore)  
EtonHouse International Schools  
Marlborough College Malaysia  
One World International School  
Tanglin Trust School  
The Winstedt School

#### International General Certificate of General Education (IGCSE)

Australian International School  
Dover Court International School  
Dulwich College (Singapore)  
GEMS World Academy (Singapore)  
Global Indian International School  
Marlborough College Malaysia  
Nexus International School (Singapore)  
One World International School  
Tanglin Trust School  
UWC South East Asia

#### International Baccalaureate (IB)

Australian International School  
Canadian International School  
Chatsworth International School  
Dulwich College (Singapore)  
EtonHouse International School and Preschool  
GEMS World Academy (Singapore)  
GESS  
Global Indian International School  
Hillside World Academy  
ISS International School  
Marlborough College Malaysia  
Nexus International School (Singapore)  
One World International School  
Overseas Family School  
Stamford American International School  
Tanglin Trust School  
UWC South East Asia

## Private Schools for Different Nationalities

### India

Global Indian International School

### Korea

Singapore Korean International School

### Japan

Waseda Shibuya Senior High School

### Australia

Australian International School Singapore

### Europe

German Europe School Singapore  
International French School  
Tanglin Trust School  
Dover Court International School

### United States of America

Stamford American International School  
Singapore American School

# Cost of Local Schools for Foreigners

Level	Nationality	Total Monthly Fee
Primary	Singapore PR	\$205
	International Student (ASEAN)	\$465
	International Student (non-ASEAN)	\$750
Secondary	Singapore PR	\$380
	International Student (ASEAN)	\$780
	International Student (non-ASEAN)	\$1,400
Pre-University		
Junior College	Singapore PR	\$460
	International Student (ASEAN)	\$1,040
	International Student (non-ASEAN)	\$1,750
Independent Junior College	Singapore PR	\$570 – \$950
	International Student (ASEAN)	\$1,200 – \$2,100
	International Student (non-ASEAN)	\$1,500 – \$2,400
Polytechnic	Singapore PR	\$5,800 (yearly)
	International Student	\$10,400 (yearly)
Institute of Technical Education (ITE) – NITEC	Singapore PR	\$5,328 (yearly)
	International Student	\$14,370 (yearly)
Institute of Technical Education (ITE) – Higher NITEC	Singapore PR	\$7,838 (yearly)
	International Student	\$20,480 (yearly)



## Cost of International Schools

School	Course	Fee
Global Indian International School	Central Board of Secondary Education (Grade 1 - 12)	\$5,048 – \$8,141 (per term)
	Cambridge Lower Secondary Primary	\$7,015 - \$8,891 (per term)
	IB Primary Years Program (Grade 1 - 5)	\$6,585 (per term)
	Cambridge IGCSE	\$9,009 (per term)
	IB Diploma Programme Y1	\$10,595 (per term)
	IB Diploma Programme Y2	\$10,669 (per term)
Stamford American International School	Pre-Nursery and Nursery	\$7,933 – \$12,203 (per term)
	Pre-Kindergarten	\$10,111 – \$15,639 (per term)
	Kindergarten 1	\$12,446 – \$18,357 (per term)
	Elementary School	\$18,372 (per term)
	Middle School	\$19,866 (per term)
	High School	\$20,760 (per term)
Tanglin Trust School	Enrollment Fee	\$2,675 (per application)
	Capital Levy	\$3,370 (per student)
	Infant	\$9,238 – \$11,495 (per term)
	Junior	\$12,098 (per term)
	Senior	\$13,958 – \$14,609 (per term)
	Sixth Form	\$15,276 (per term)



School	Course	Fee
United World College South East Asia (UWCSEA)	Application Fee – Day Student (per campus, per application)	\$615
	Application Fee – Boarding Student (available from Grade 8, per application)	\$825
	Enrollment Fee (one-time)	\$4,900
	K1 – Grade 1	\$39,630 (per term, first year) \$35,570 (per term, subsequent years)
	Grade 2 - 5	\$40,065 (per term, first year) \$36,005 (per term, subsequent years)
	Grade 6 – 10 (I)GCSE	\$45,085 (per term, first year) \$41,370 (per term, subsequent years)
	Grade 10 FIB, Grade 11, Grade 12	\$47,085 (per term, first year) \$43,025 (per term, subsequent years)
Overseas Family School	Registration Fee (per student, all levels)	\$2,000
	Pre-Kindergarten – K2	\$8,000 – \$15,000 (per term)
	Elementary (Grade 1 – 5)	\$16,250
	Middle School (Grade 6 – 8)	\$17,500
	High School (Grade 9 – 12)	\$19,750 – \$20,500

